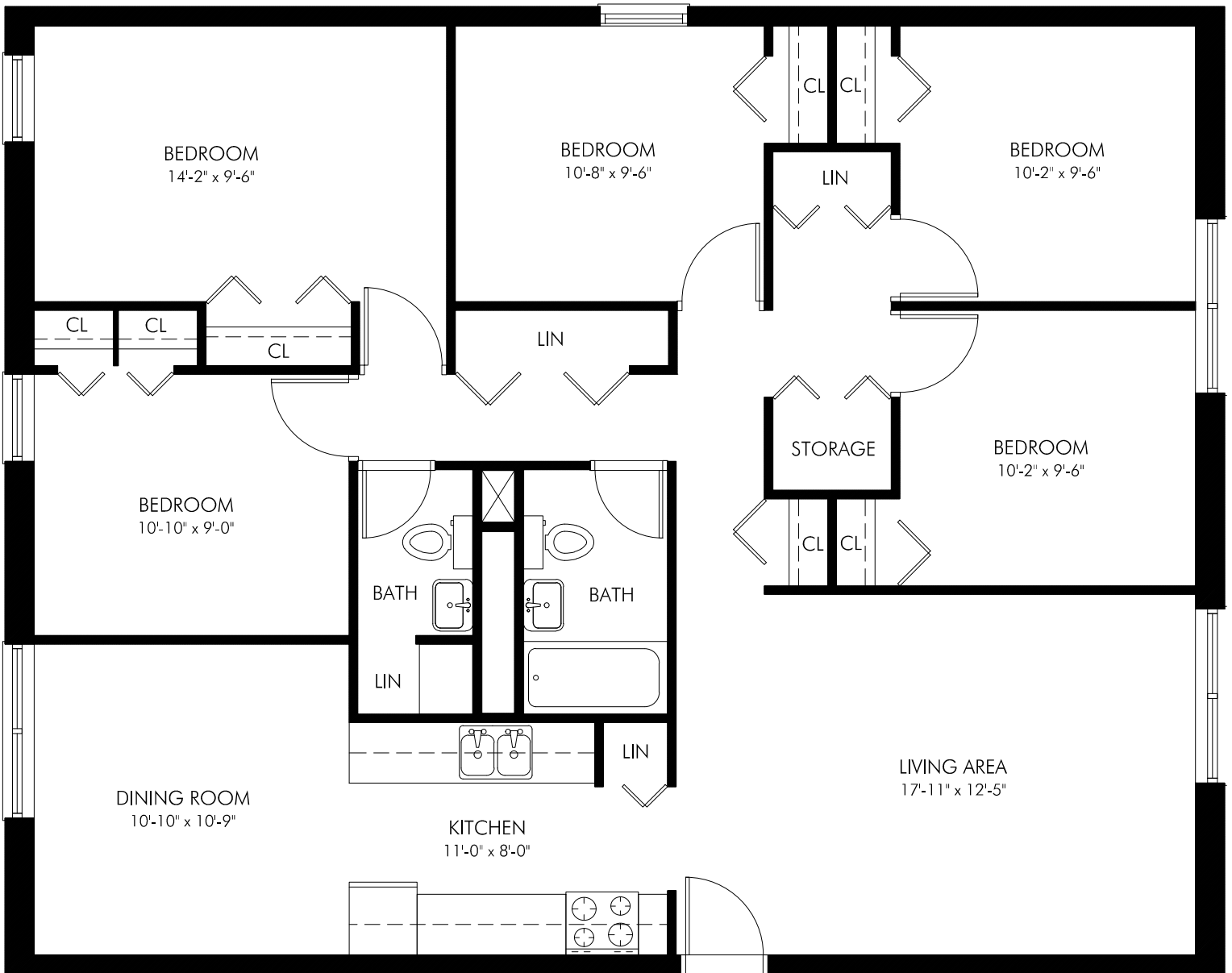


ARVERNE VIEW

57-17 SHORE FRONT PARKWAY
ARVERNE, NY 11692



5 BR/1.5 BATH



ALL DIMENSIONS ARE APPROXIMATE AND SUBJECT TO NORMAL CONSTRUCTION VARIANCES AND TOLERANCES. SPONSOR RESERVES THE RIGHT TO MAKE CHANGES.